



Repair Movies, Mechanical

Applicable for S500, W580

Contents

1	Read this first!	2
2	Movies	3
2.1	Disassembly	3
2.2	Part Replacement.....	3
2.3	Reassembly.....	5
3	Revision History	5



1 Read this first!

By clicking on the pictures with blue borders in the Movies section, the repair movies will be shown in an Internet Explorer window.

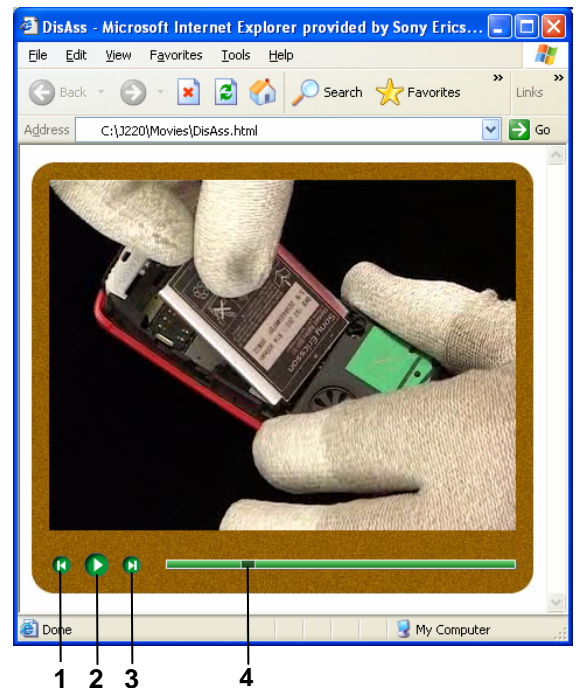
However, when running the movies on a Windows XP computer with Service Pack 2 installed, the movies become blocked each time you try to access them and will not be launched until you have accepted to unblock the content and then again confirmed the action.

To avoid this, you can adjust your computer's security settings in the following way:

- open Internet Explorer
- click Tools / Internet Options / Advanced, and scroll down until you find Security
- check the box with the text 'Allow active content to run in files on My Computer'

NOTE! Do NOT CHANGE THIS SETTING UNLESS YOU ARE AWARE OF HOW THIS WILL AFFECT THE SECURITY OF YOUR COMPUTER!

-
- After having the first movie window opened, you should adjust the size of the Internet Explorer window until it looks like the adjacent picture example.
- Furthermore, the movie can be controlled with the help of three buttons and a slider handle, as follows:
 - 1 - Go to the beginning of the movie
 - 2 - When running - 'Freeze' the picture
When 'frozen' - Start running from current position
 - 3 - Go to the end of the movie
 - 4 - Slide the handle to any wanted part of the movie
or use it as a slow motion 'scrubber'



NOTE! THESE REPAIR MOVIES ARE TO BE REGARDED AS A SUPPLEMENT TO AND NOT A SUBSTITUTE FOR THE WORKING INSTRUCTIONS.

NOTE! WHEN WATCHING THESE MOVIES YOU SHOULD HAVE THE WORKING INSTRUCTIONS AVAILABLE SINCE THE WORKING INSTRUCTIONS CONTAIN A LOT OF INFORMATION NOT INCLUDED IN THE REPAIR MOVIES.

2 Movies

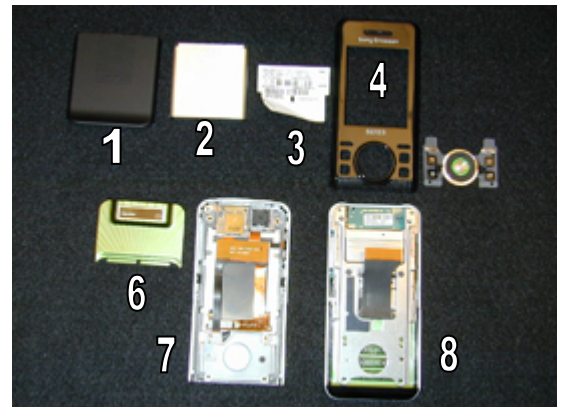
There are movies covering all of the disassembly and reassembly procedures documented in the mechanical working instructions for this product. No specific part replacements movies are available for this product due to the ease of following the written part specific procedures.

Disassembly

Perform the disassembly in the following order:

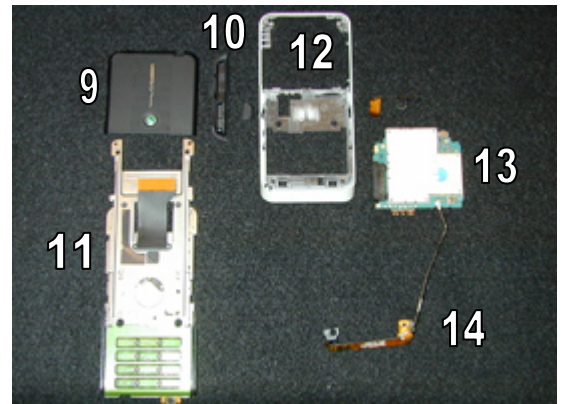
Upper Half of Phone

- Remove Battery Cover (1)
- Remove Battery (2)
- Remove Label (3)
- Remove Front Cover (4)
- Remove Camera Cover (6)
- Remove 6 Front Cover Screws (not shown)
- Separate Front Frame (7) and Rear Frame / Hinge Assembly (8)



Lower Half of Phone

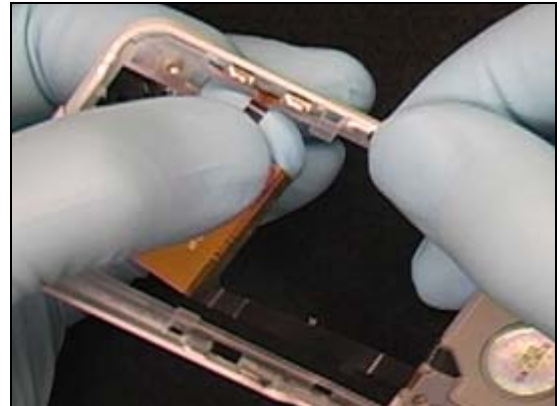
- Remove Upper Rear Cover (9)
- Remove 4 Rear Frame Screws (not shown)
- Remove Chin Cover (10)
- Remove Hinge Assembly (11) from Rear Frame (12)
- Remove PC Board/Antenna Assembly (13 & 14) from Rear Frame (12)
- Remove Antenna/cable Assembly (14) from PC Board (13)



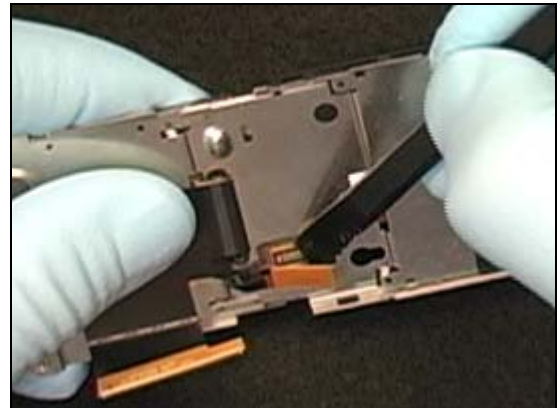


Part Replacement

2.1.1 Bonzer Flex



2.1.2 Main Keypad Flex

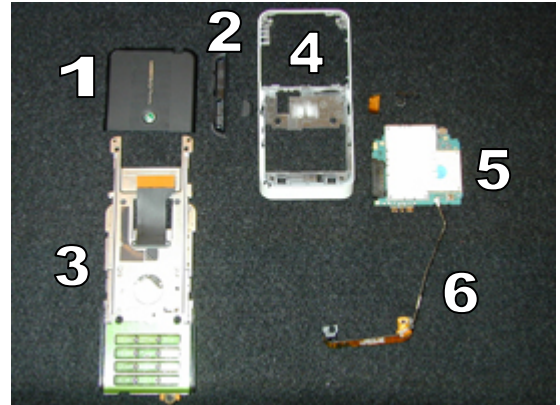


Reassembly

Perform the reassembly in the following order:

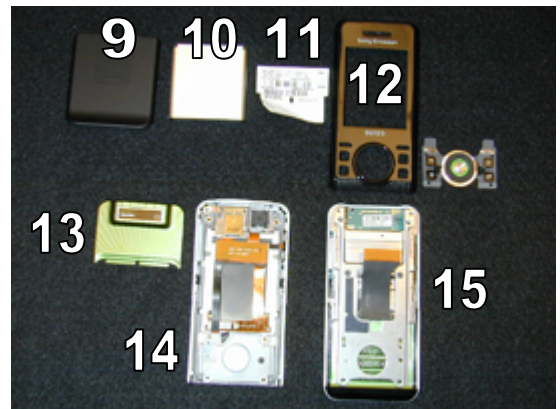
Lower half of phone

- Attach antenna/coax cable assembly(6) to PC Board (5)
- Install PC Board/Antenna assembly (5 & 6) into Rear Frame (4)
- Attach Hinge Assembly (3) to Rear Frame (4)
- Install 4 Rear Frame Screws (not shown)
- Install Upper Rear Cover (1)
- Install Chin Cover (2)



Upper half of phone

- Attach Front Frame (14) and Rear Frame / Hinge Assembly (15)
- Install 6 Front Cover Screws (not shown)
- Install Camera Cover (13)
- Install Front Cover (12)
- Install Label (11)
- Install Battery (10)
- Install Battery Cover (9)



3 Revision History

Rev.	Date	Changes / Comments
A	2007-May-24	Initial Release
B	2007-June-24	Updated Release
C	2007-September-5	Updated keypad flex title